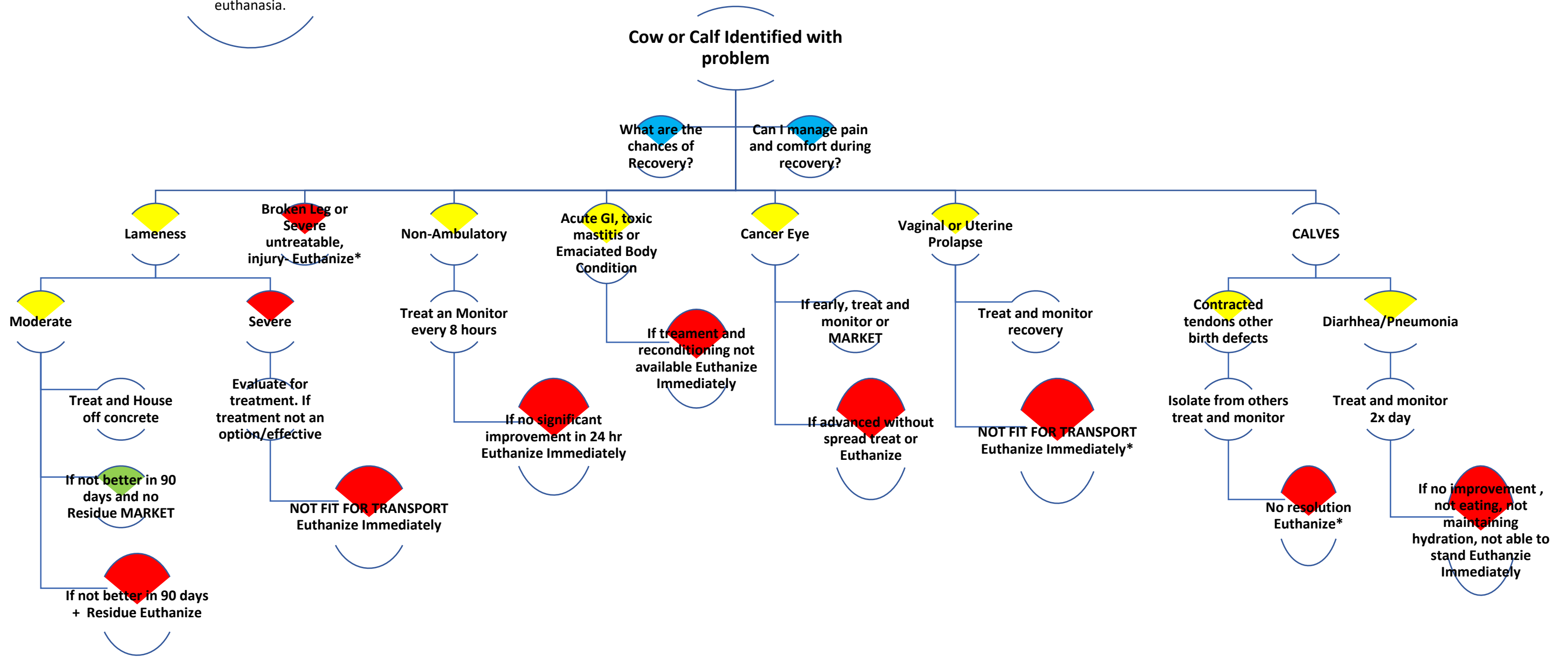


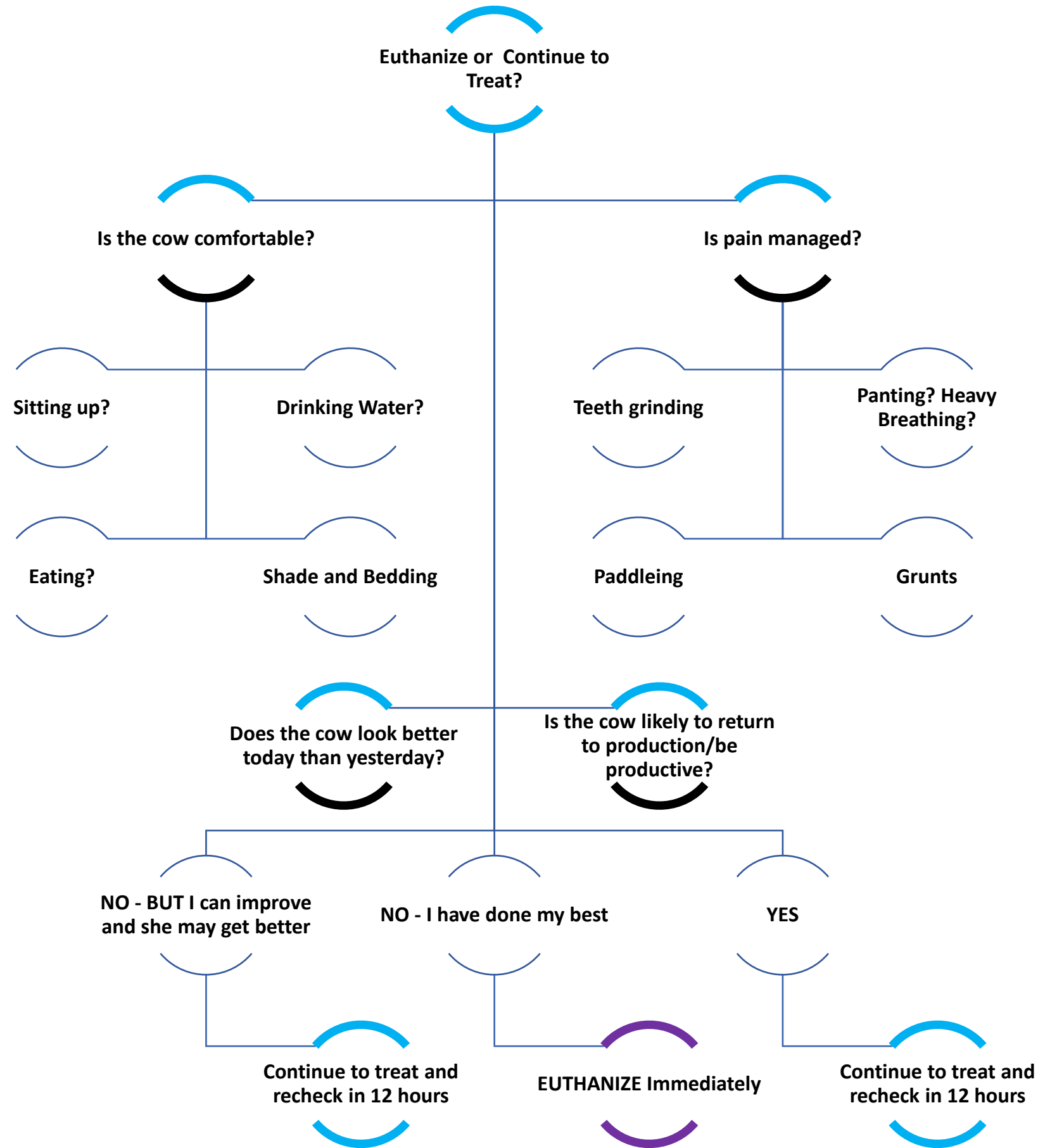
# Proactive Culling & Timely Euthanasia

Timely Euthanasia is defined by euthanising animal as soon as the need is identified AND can be carried out in a safe manner. Managing safety may require relocation of cattle or evacuation of the immediate area or the arrival of a person trained to perform euthanasia.



\* In cases where cattle are otherwise free from infectious disease or residues, on farm slaughter, if available in a humane and timely manner may be considered a viable alternative

# Daily Quality of Life Assessment for Dairy Cattle



# DAILY SHIFT QOL ASSESSMENT

*To be completed by caregiver's manager  
- Manager is responsible for sharing  
results for administering euthanasia*

